



CGI FURNITURE

Bryanston Court I, George Street,
Marylebone, W1H

£6,000 Per Month,

NAPIER WATT

T: 0207 935 0011
E: enquiries@napierwatt.co.uk
W: napierwatt.co.uk

35 Berkeley Square, Mayfair, London, W1J 5BF







Description

Bryanston Court is a beautifully-maintained, secure purpose-built mansion block with heating and hot water included, a 24-hour porter, a refurbished lobby, and cycle storage in the basement. The apartment is in excellent condition with period features and offers good-sized accommodation. It has two double bedrooms and two bathrooms (one en-suite). The reception room and hallway have wood flooring, with carpets in the bedrooms. There is excellent ceiling height and built-in storage throughout. The building is located at the western end of George Street, close to Bryanston Square, and within walking distance of Marylebone Village, Marble Arch & Hyde Park.

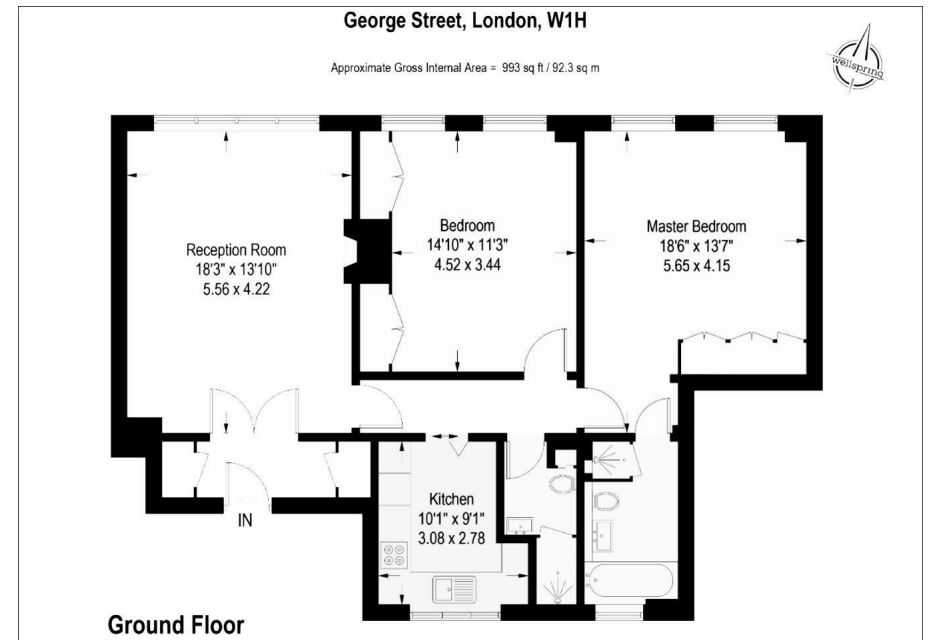
Two Bedrooms : Two Bathrooms : 24-Hour Porter : Heating & Hot Water Included In Rental Price : Westminster Council Tax Band G : EPC Rating D

Key Features

- 24-HOUR PORTER
- EQUIDISTANT MARYLEBONE HIGH ST & CONNAUGHT VILLAGE
- SECONDARY GLAZED
- SHORT WALK FROM OXFORD STREET
- HEATING & HOT WATER INCLUDED
- UNFURNISHED
- CYCLE RACK BY SEPERATE ARRANGEMENT

Terms

Fees & Charges: Tenancies exceeding £100,000 Per annum £480 inc VAT, Tenancies where a company is a tenant £480 Inc VAT.



IMPORTANT: We would inform prospective purchasers that these sales particulars have been prepared as a general guide only. A detailed survey has not been carried out, nor the services, appliances and fittings tested. Room sizes should not be relied upon for furnishing purposes and are approximate. If floor plans are included, they are for guidance only and illustration purposes only and may not be to scale. If there are any important matters likely to affect your decision to buy, please contact us before viewing the property.